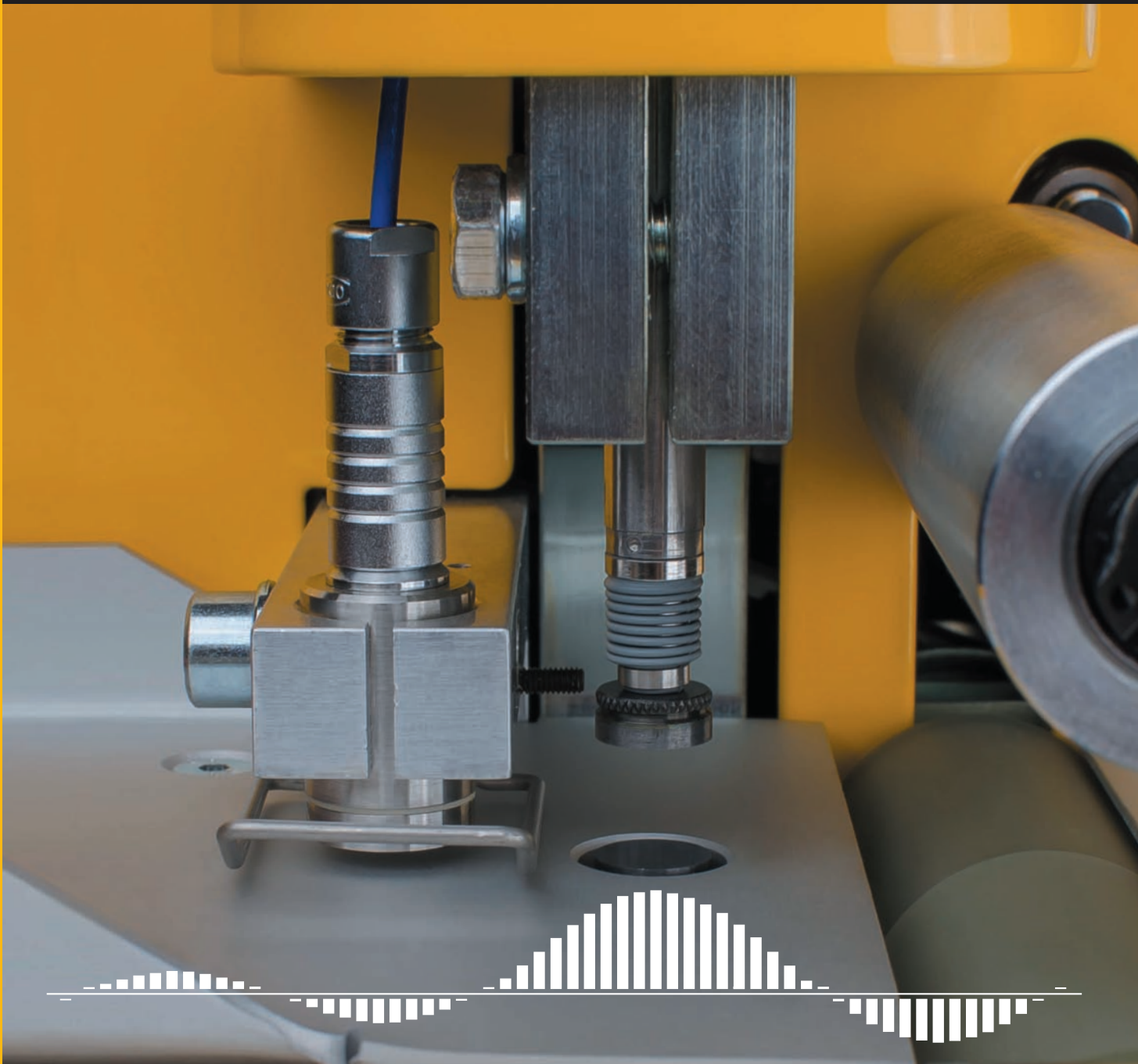


GET IN CONTACT



PRO-LAB

GAUGE MEASUREMENT WITH **PRO-LAB II**

ABSOLUTE OR CAPACITIVE
ADAPTABLE
RELIABLE



PLASTCONTROL

GAUGE MEASUREMENT WITH **PRO-LAB II**

The **PRO-LAB II** has a touching sensor for the absolute, real thickness measurement of film profiles according to the norms DIN 533370/ISO 4593/ASTM-D 6988-08.

In addition to the touching sensor, the system is available with a capacitive sensor for a continuous measurement mode, or with a combination of both sensors.

To analyze the thickness distribution, a film strip is put into the holding device of the PRO-LAB II system. The measuring value is taken with the mechanical detection head at selectable distances, or continuous with the capacitive sensor.

The maintenance free stepper motor moves the film strip step by step to the mechanical detection sensor.

When the capacitive sensor is supplied, the film is moved in a continuous mode.

To avoid a cross movement of the film strip, if different widths of film strips are measured, a guiding frame keeps the film strip in position.

Additionally, the system will be delivered with a container to put the film strip in. This container keeps the film off of the floor to help keep dust and dirt from contaminating the film. Small contaminants will be eliminated by a unit at the entrance of the device (not usable with sticky film surfaces).

The use of commercial anti-static tissues is required.



Picture above: PRO-LAB II (basic equipment)

The PRO-LAB II basic system is equipped with a serial interface, so that the system can be connected to a customer PC. The software package is Windows based and has a user friendly environment allowing a professional profile analysis.

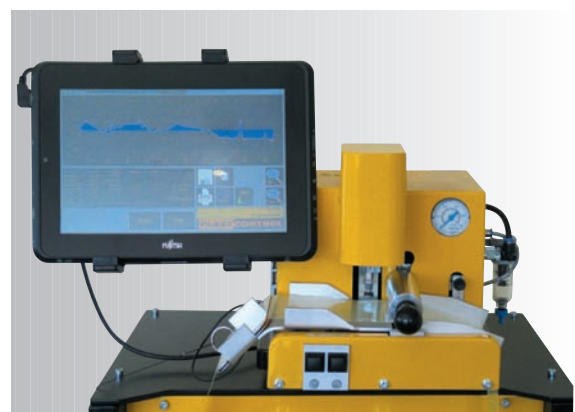


Based on meaningful profile graphics, average values, min. and max. values, the tolerance of the pre-selected set points will be easily detected.

With the help of Windows, these measuring results can be documented with product or order numbers, archived or recorded.

Picture left: PRO-LAB II with film guiding device (optional equipment)

Picture below: PRO-LAB II visualization (optional equipment)



PRO-LAB II

SIMPLY USE IT!

SCREEN DISPLAY

- Circle profile 1
- Linear profile 2
- Fourier analysis 3
- Adjustable Sigma display (1, 2 or 3 Sigma)
- Min./max. average thickness

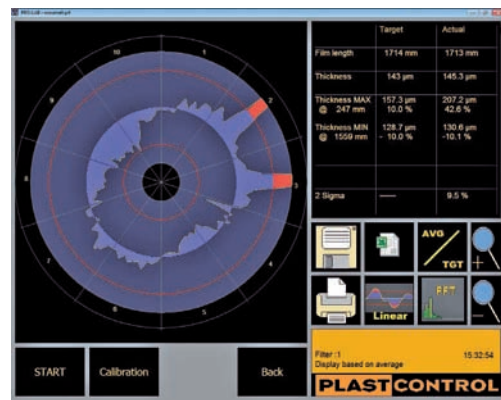
USER TOOLS

- Tools for graphic adjustment 4
- Profile mirroring
- Profile shifting
- Adjustable filtering
- Automatic or manual Spike elimination
- Automatic slip compensation
- Serial interface to OP
- USB interface for profile storage

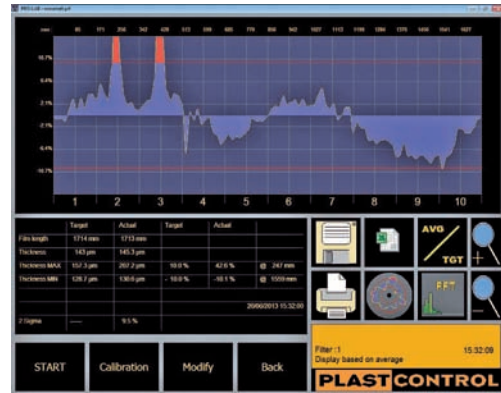
TECNICAL DATA

- Measuring range: 10 – 400 μ
- Measuring resolution: $\pm 0,1 \mu$
- Measuring point: 9 mm \varnothing
- Film strip width: 60 – 90 mm
- Air connection: 4 – 8 bar
- Power supply voltage: 115 – 240 VAC

Picture below: PRO-LAB II with film strip container (optional equipment)



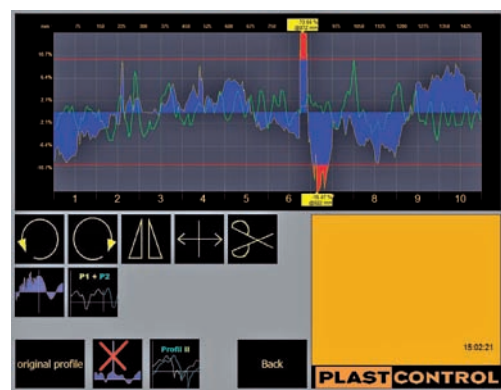
1



2



3



4



PLAST-CONTROL GMBH WALTER-FREITAG-STR. 15 · 42899 REMSCHEID · GERMANY
 TEL. +49 (0)2191-9480-0 · FAX +49 (0)2191-9480-49
 WWW.PLASTCONTROL.DE · INFORMATION@PLASTCONTROL.DE

PLAST-CONTROL LTD. UNIT 17, LEEWARD ROAD · ASHTON-PRESTON · LANCASHIRE PR2 2TE · GREAT BRITAIN
 TEL. +44 1772 769963 · FAX +44 1772 736357
 WWW.PLASTCONTROL.CO.UK · ADMIN@PLASTCONTROL.CO.UK

PLAST-CONTROL INC. 65 PARKER STREET, UNIT 10 · NEWBURYPORT, MA 01950 · USA
 TEL. +1 978 462 0306 · FAX +1 978 462 1425
 WWW.PLASTCONTROL.NET

PLAST-CONTROL ASIA LTD. 7F, NO. 155, KEELUNG ROAD · SEC. 1, XINYI DISTRICT · TAIPEI CITY, 110 · TAIWAN
 TEL +886 2 3765 1808 · FAX +886 2 2767 2538
 WWW.PLASTCONTROL.COM

PLAST-CONTROL CHINA CO. LTD. UNIT 53 · FLOOR 11 · NO.6088 HUMIN ROAD · SHANGHAI
 TEL +86 21 5413 3383 · FAX +86 21 5413 3323
 INFO@PLASTCONTROL.CN

PLASTCONTROL